

MARTINDALE



THE WISCONSIN

- 1,334 square feet of living space
- Three bedrooms and one and one-half or two baths
- Covered front porch
- Features a mud room off back entrance
- Security system
- Maintenance-free vinyl siding system
- High efficiency gas furnace
- Central air conditioning



The Wisconsin offers an open, efficient floor plan with plenty of first floor living space that is ideal for any family activity and for those who want the extra space to entertain loved ones, friends and neighbors. The easy flow of the kitchen in the dining area provides space for gathering and entertaining. The kitchen is complete with ample cabinets, counter space, and a pantry. The three bedrooms and one or two full baths are located on the second floor. The bedrooms are spacious and have plenty of closet space.

Project Sponsors:



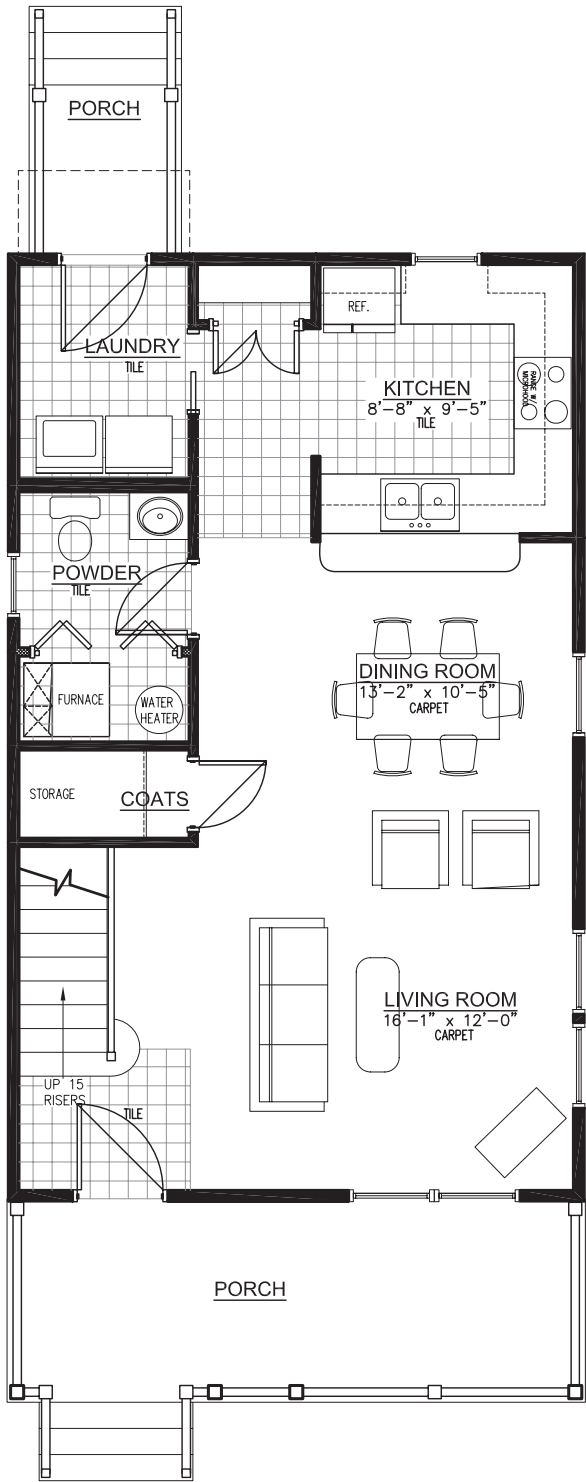
For inquiries, please call:
317.923.1650

or visit our website at:
www.MartindaleOnTheMonon.com

Martindale-Brightwood, LLC is constantly improving its product and reserves the right to revise, change, or substitute product features and designs. This brochure is for illustration purposes only and does not in any way constitute a legal contract. Upgrades are available at an additional charge. Prices, incentives, options, and upgrades are subject to change.



First Floor



Second Floor

