

MARTINDALE



# THE BEELER

- 1,176 square feet of living space
- Two bedrooms and two baths
- Covered front porch
- Available as a two or three bedroom floor plan
- Security system
- Maintenance-free vinyl siding system
- High efficiency gas furnace
- Central air conditioning



The one-story Beeler is reminiscent of the traditional bungalow found in many urban neighborhoods. Its sensible floor plan of 1,176 square feet is perfect for new families, young couples, and empty nesters who desire a home that reflects their comfortable lifestyle. The open living, dining and kitchen area is spacious and cozy. The home has a master suite and the option of one or two guest bedrooms. Other amenities include a laundry area, a covered front porch, and a kitchen with a built-in island/breakfast bar and easy to maintain, energy efficient appliances.

Project Sponsors:



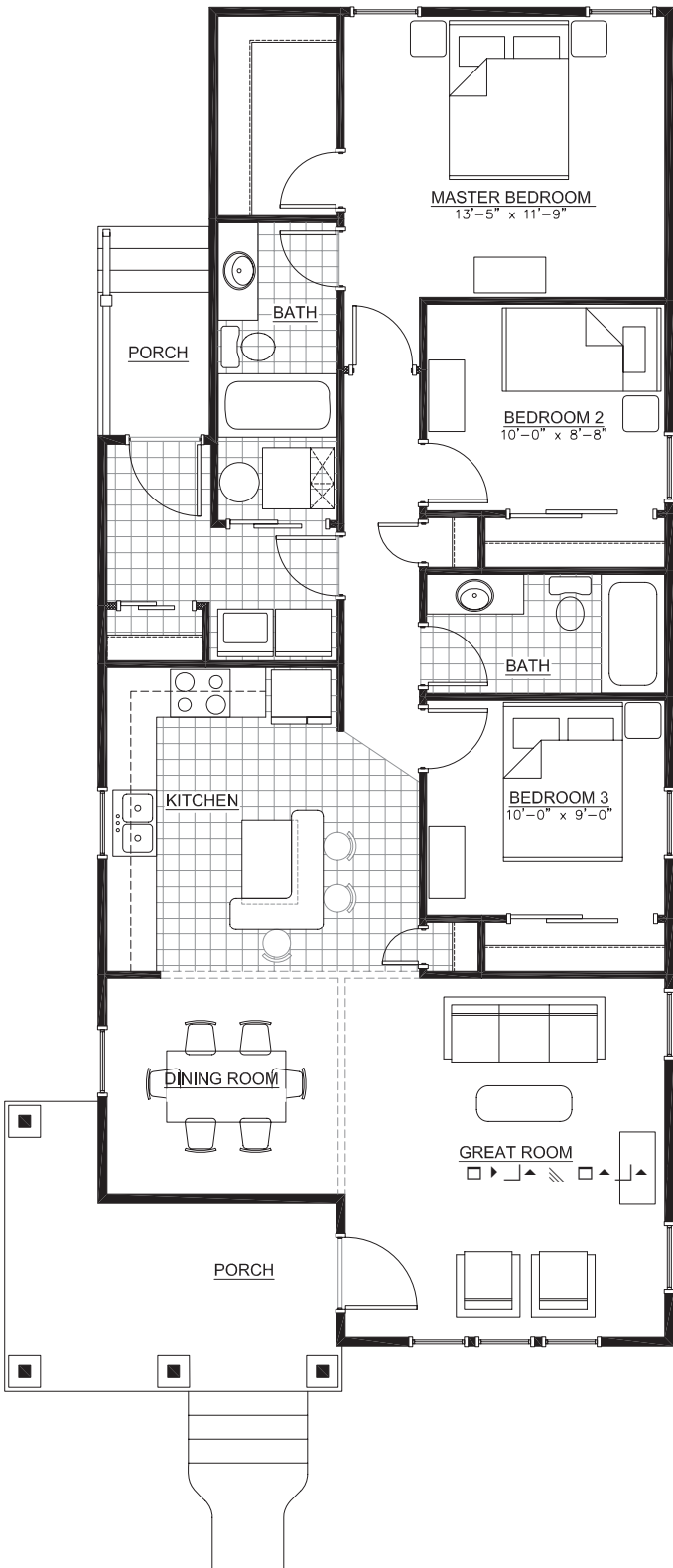
For inquiries, please call:  
317.923.1650

or visit our website at:  
[www.MartindaleOnTheMonon.com](http://www.MartindaleOnTheMonon.com)

Martindale-Brightwood, LLC is constantly improving its product and reserves the right to revise, change, or substitute product features and designs. This brochure is for illustration purposes only and does not in any way constitute a legal contract. Upgrades are available at an additional charge. Prices, incentives, options, and upgrades are subject to change.



# Floor Plan A



# Floor Plan B

